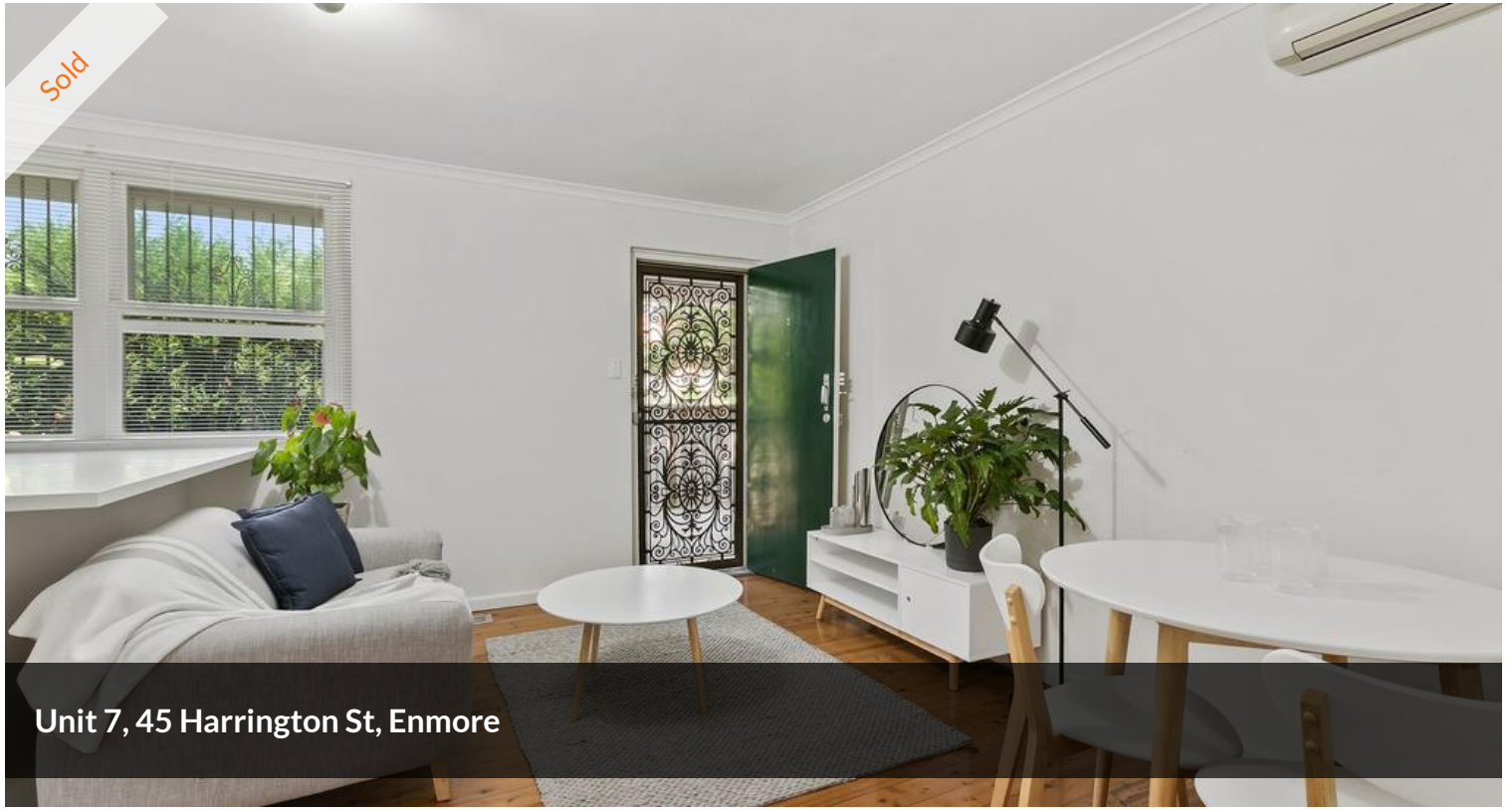


Sold



Unit 7, 45 Harrington St, Enmore



## Parkside Apartment in a Sought After Inner West Pocket

In the garden framed 'Harrington Court', this two-bedroom apartment makes a great starter home or investment close to vibrant lifestyle attractions. Featuring an elevated ground floor position, the apartment is fresh and bright with polished pine floorboards and high ceilings featured throughout.

A combined living and dining area featuring a leafy green backdrop, sits beside an all-white kitchen complete with a gas stove and breakfast bar. Both bedrooms offer built-in robes and capture northern light, with the main generous in size. Additional highlights include a car parking space and air-conditioning, with the building featuring manicured communal spaces.

On a quiet cul-de-sac flanked by Ryan Park, the block is set within a short walk of the buzzing bars and restaurants of Enmore Road and King Street, Stanmore Station, city buses and Newington College, with Marrickville Metro in close proximity.

🛏 2 🚿 1 🚗 1

<b>Price</b>	SOLD
<b>Property Type</b>	Residential
<b>Property ID</b>	1752

### Agent Details

Martha Nissirios - 0418 608 752  
Martha Nissirios - 0418 608 752

### Office Details

Bondi Junction  
Shop 4, 350 Oxford Street Bondi  
Junction, NSW, 2022 Australia  
02 9389 1300

**BR**  
BONDIREALTY